

briteair Swirl Diffuser Type RSW

Fixed Vane Circular Swirl Diffuser With Curved Frame.

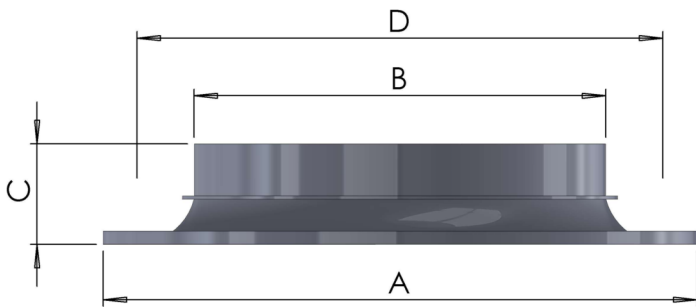
The curved frame is to assist with horizontal air distribution and makes it most suitable for mounting in exposed applications.

Mounting Height: 2.4 – 4.5 metres .



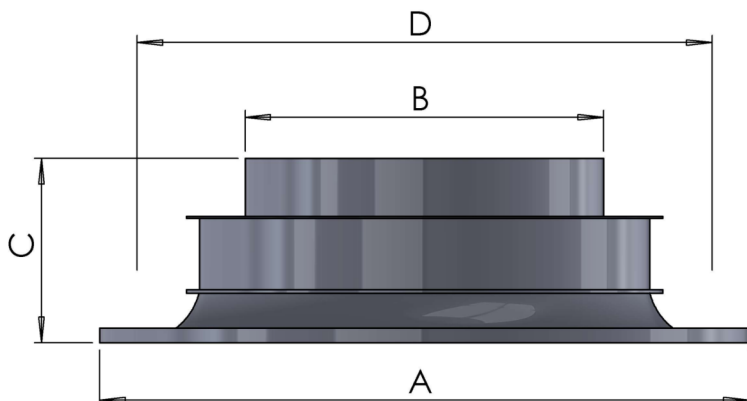
Multiple Variations

RSW - 12 - C - Circular



Nom Size	A	B	C	D
150 / 160	245 o/a	157 Dia	70mm	215 Dia
200	300 o/a	197 Dia	70mm	265 Dia
250	350 o/a	247 Dia	75mm	320 Dia
315	450 o/a	312 Dia	75mm	415 Dia
355	515 o/a	352 Dia	90mm	480 Dia
400	560 o/a	397 Dia	95mm	525 Dia
450	600 o/a	447 Dia	95mm	565 Dia
630	800 o/a	627 Dia	95mm	765 Dia

RSW - 12 - C - Clipped Adapter

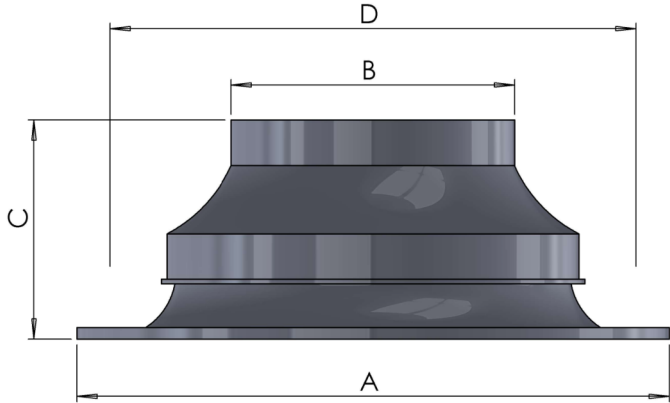


Nom Size	A	B	C	D
150 / 160	245 o/a	157 Dia	120mm	215 Dia
200	300 o/a	197 Dia	120mm	265 Dia
250	350 o/a	247 Dia	125mm	320 Dia
315	450 o/a	312 Dia	125mm	415 Dia
355	515 o/a	352 Dia	140mm	480 Dia
400	560 o/a	397 Dia	145mm	525 Dia
450	600 o/a	447 Dia	145mm	565 Dia
630	800 o/a	627 Dia	145mm	765 Dia

Please contact our **Sales Office** on 01924 444 174 for selection guidance on the above.

briteair Swirl Diffuser Type RSW

RSW - 12 - C - Lapped Adapter



Nom Size	A	B	C	D
150 / 160	245 o/a	157 Dia	Size TBC*	215 Dia
200	300 o/a	197 Dia	Size TBC*	265 Dia
250	350 o/a	247 Dia	Size TBC*	320 Dia
315	450 o/a	312 Dia	Size TBC*	415 Dia
355	515 o/a	352 Dia	Size TBC*	480 Dia
400	560 o/a	397 Dia	Size TBC*	525 Dia
450	600 o/a	447 Dia	Size TBC*	565 Dia
630	800 o/a	627 Dia	Size TBC*	765 Dia

*Please contact our Sales office for dimension C

How to Order

Type	No of Blades	Edge Detail	Size	Overall Size	Finish
RSW	12	C - Circular	160 250 315 350 400 450 630	e.g. 450o/a	RAL Colour Galv Finish

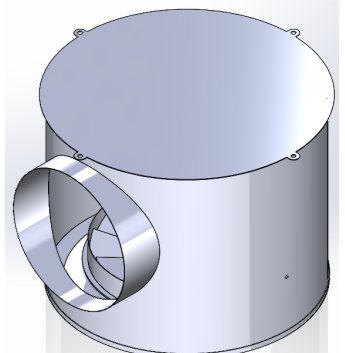
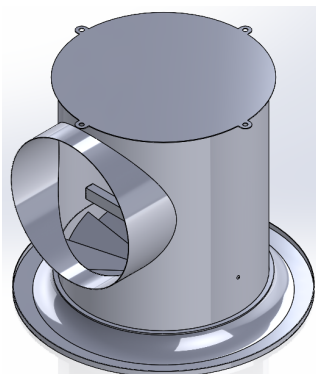
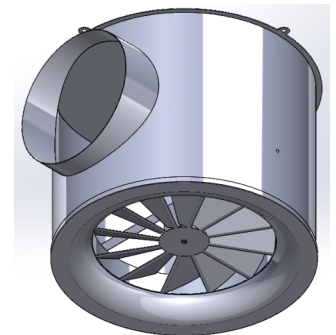
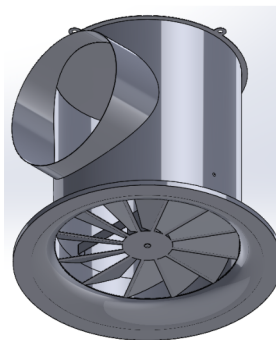
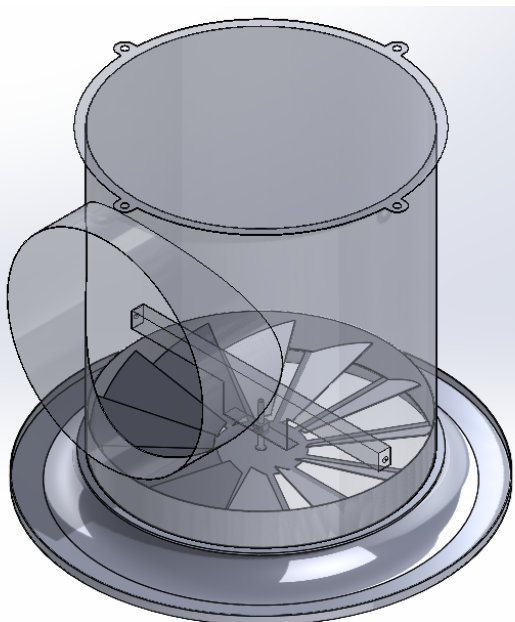
e.g. 10 No RSW - 12 - C - 315 - RAL 9010

Plenum Box Variations

To Suit Neck

To Suit Overall

Fixing Detail



Performance Data

Size		20	30	40	50	60	70	80
160 DIA	L/s	20	30	40	50	60	70	80
	Throw m 0.25 - 0.5 m/s	0.6 - 0.3	1.0 - 0.5	1.3 - 0.6	1.6 - 0.8	1.9 - 1.0	2.3 - 1.1	2.6 - 1.3
	Pa	4	10	18	28	40	54	71
	NR	8	19	27	34	39	43	47
200 DIA	L/s	30	40	50	60	70	80	100
	Throw m 0.25 - 0.5 m/s	0.8 - 0.4	1.1 - 0.6	1.4 - 0.7	1.7 - 0.8	2.0 - 1.0	2.2 - 1.1	2.5 - 1.3
	Pa	6	11	17	24	33	43	55
	NR	10	18	25	30	34	38	41
250 DIA	L/s	60	80	100	120	140	160	180
	Throw m 0.25 - 0.5 m/s	1.4 - 0.7	1.8 - 0.9	2.0 - 1.0	2.7 - 1.4	3.2 - 1.6	3.6 - 1.8	4.1 - 2.0
	Pa	10	17	22	39	53	70	88
	NR	16	24	27	35	40	43	47
315 DIA	L/s	80	100	120	150	180	200	220
	Throw m 0.25 - 0.5 m/s	1.7 - 0.9	1.9 - 1.0	2.6 - 1.3	3.2 - 1.6	3.9 - 1.9	4.3 - 2.2	4.1 - 2.1
	Pa	5	7	12	19	27	33	31
	NR	14	17	25	32	37	40	37
350 DIA	L/s	100	125	150	175	200	225	250
	Throw m 0.25 - 0.5 m/s	1.7 - 0.8	2.4 - 1.2	2.8 - 1.4	3.3 - 1.6	3.8 - 1.9	4.2 - 2.1	4.7 - 2.4
	Pa	5	10	15	20	26	33	41
	NR	12	21	27	31	35	38	41
400 DIA	L/s	150	180	200	220	250	280	300
	Throw m 0.25 - 0.5 m/s	2.3 - 1.1	2.7 - 1.4	3.0 - 1.5	3.3 - 1.7	3.8 - 1.9	4.2 - 2.1	4.5 - 2.3
	Pa	7	10	13	16	20	25	29
	NR	22	27	30	32	36	39	41
450 DIA	L/s	200	250	300	320	350	380	400
	Throw m 0.25 - 0.5 m/s	2.5 - 1.3	3.2 - 1.6	3.8 - 1.9	4.1 - 2	4.5 - 2.2	4.8 - 2.4	5.1 - 2.5
	Pa	9	14	20	23	27	32	35
	NR	21	27	32	34	37	39	40
630 DIA	L/s	350	400	450	500	550	600	650
	Throw m 0.25 - 0.5 m/s	3.2 - 1.6	3.7 - 1.8	4.1 - 2.1	4.6 - 2.3	5.1 - 2.5	5.5 - 2.8	6 - 3
	Pa	7	9	11	14	17	20	24
	NR	15	18	22	25	27	30	32

NOTE:

All throws based on terminal velocities of 0.25 - 0.5 m/s

For Return Air Applications Multiply Pa x 0.75, NC Levels remain the same

Please contact our **Sales Office on 01924 444 174** for selection guidance on the above.