

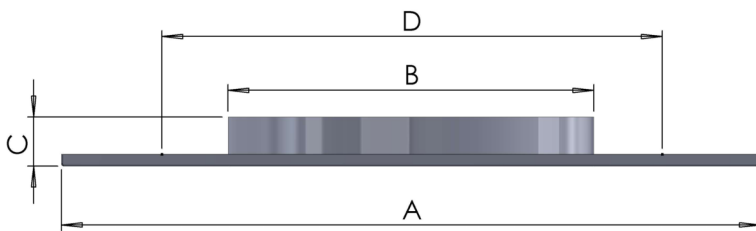
briteair Swirl Diffuser Type FSW

Manufactured from Zintec or Galvanised sheet steel, the flush faced vanes make this Diffuser suitable for exposed and suspended ceilings in both Retail and Commercial applications.



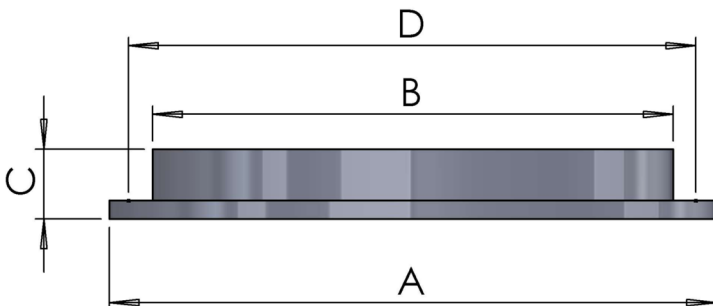
Multiple Variations

FSW - 12 - L - Lay In



Nom Size	A	B	C	D
160	595 x 595	157 Dia	45mm	180 Dia
200	595 x 595	197 Dia	45mm	220 Dia
250	595 x 595	247 Dia	45mm	270 Dia
315	595 x 595	312 Dia	45mm	335 Dia
400	595 x 595	397 Dia	45mm	420 Dia

FSW - 12 - C - Circular

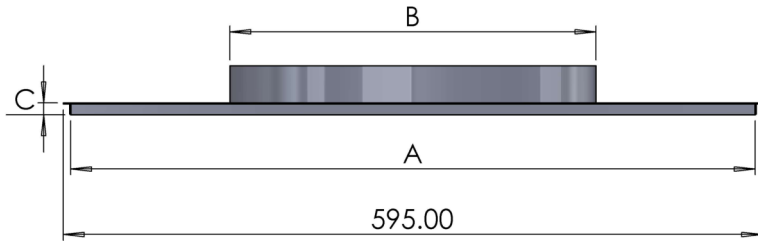


Nom Size	A	B	C	D
160	200 o/a	157 Dia	45mm	180 Dia
200	250 o/a	197 Dia	45mm	220 Dia
250	300 o/a	247 Dia	45mm	270 Dia
315	363 o/a	312 Dia	45mm	335 Dia
400	480 o/a	397 Dia	45mm	420 Dia

Please contact our **Sales Office** on 01924 444 174 for selection guidance on the above.

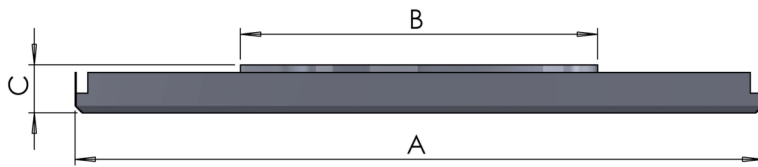
briteair Swirl Diffuser Type FSW

FSW - 12 - T - Tegalur



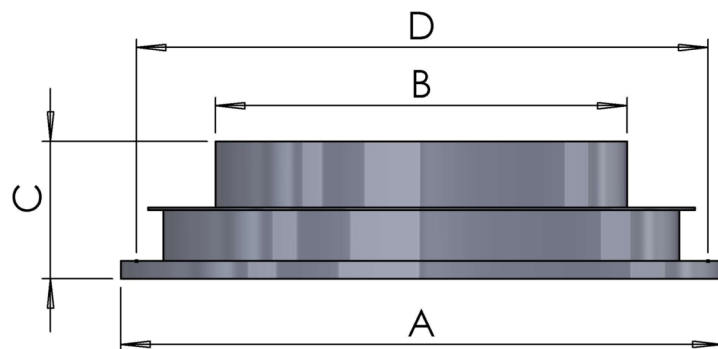
Nom Size	A	B	C
160	574 / 584	157 Dia	Drop Size
200	574 / 584	197 Dia	Drop Size
250	574 / 584	247 Dia	Drop Size
315	574 / 584	312 Dia	Drop Size
400	574 / 584	397 Dia	Drop Size

FSW - 12 - M - Clip In



Nom Size	A	B	C
160	599 x 599	157 Dia	45mm
200	599 x 599	197 Dia	45mm
250	599 x 599	247 Dia	45mm
315	599 x 599	312 Dia	45mm
400	599 x 599	397 Dia	45mm

FSW - 12 - C - Clipped Adapter



Nom Size	A	B	C	D
160	200 o/a	157 Dia	95mm	190 Dia
200	250 o/a	197 Dia	95mm	235 Dia
250	300 o/a	247 Dia	95mm	285 Dia
315	363 o/a	312 Dia	95mm	350 Dia
400	480 o/a	397 Dia	95mm	435 Dia

Please contact our **Sales Office** on 01924 444 174 for selection guidance on the above.

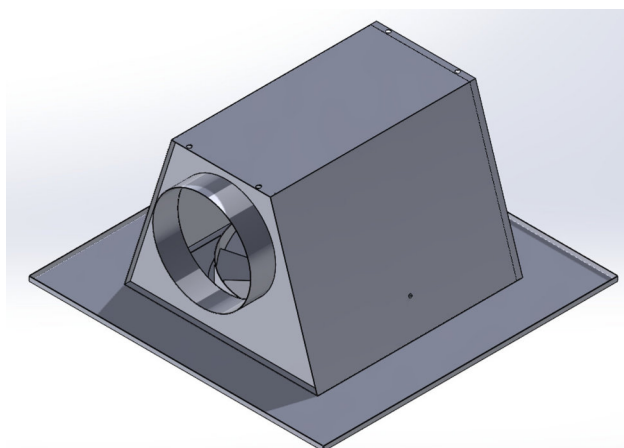
briteair Swirl Diffuser Type FSW

How to Order

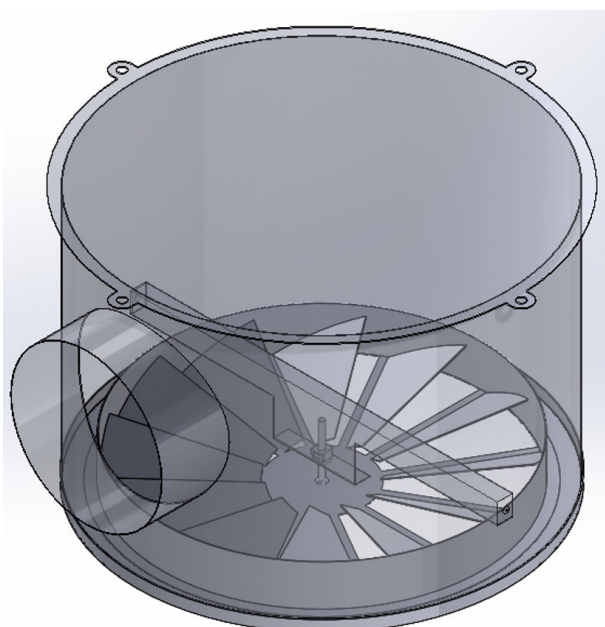
Type	No of Blades	Edge Detail	Size	Overall Size	Finish
FSW	12	C - Circular L - Lay In T - Tegular M - Clip In	160 200 250 315 400	e.g. 595 x 595o/a	RAL Colour

e.g. 10 No FSW - 12 - C - 315 - RAL 9010

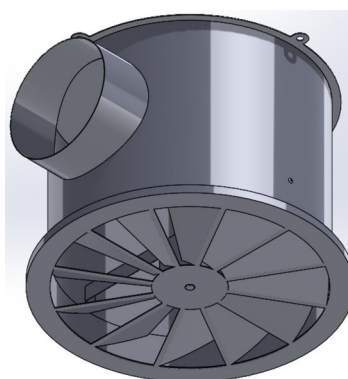
Plenum Box Variations



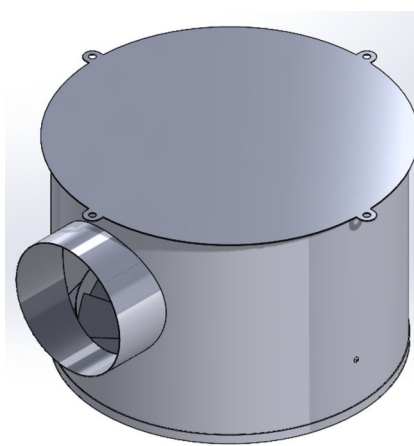
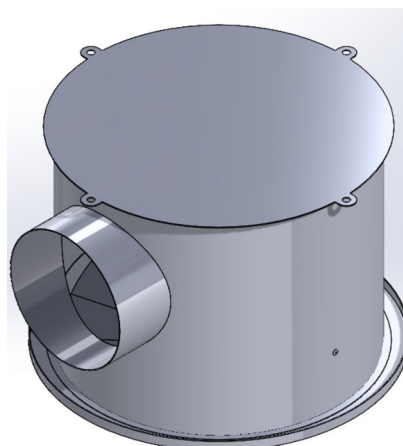
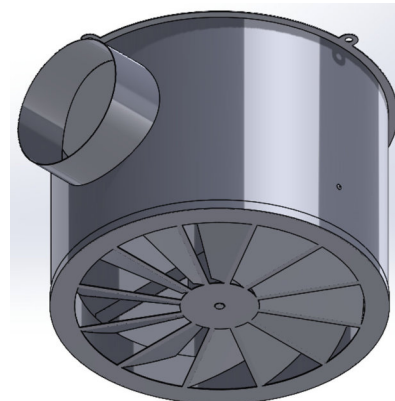
Fixing Detail



To Suit Neck



To Suit Overall



Performance Data

Size		20	30	40	50	60	70	80
160 DIA	L/s	20	30	40	50	60	70	80
	Throw m 0.25 - 0.5 m/s	0.6 - 0.3	1.0 - 0.5	1.3 - 0.6	1.6 - 0.8	1.9 - 1.0	2.3 - 1.1	2.6 - 1.3
	Pa	4	10	18	28	40	54	71
	NR	8	19	27	34	39	43	47
200 DIA	L/s	30	40	50	60	70	80	100
	Throw m 0.25 - 0.5 m/s	0.8 - 0.4	1.1 - 0.6	1.4 - 0.7	1.7 - 0.8	2.0 - 1.0	2.2 - 1.1	2.5 - 1.3
	Pa	6	11	17	24	33	43	55
	NR	10	18	25	30	34	38	41
250 DIA	L/s	60	80	100	120	140	160	180
	Throw m 0.25 - 0.5 m/s	1.4 - 0.7	1.8 - 0.9	2.0 - 1.0	2.7 - 1.4	3.2 - 1.6	3.6 - 1.8	4.1 - 2.0
	Pa	10	17	22	39	53	70	88
	NR	16	24	27	35	40	43	47
315 DIA	L/s	80	100	120	150	180	200	220
	Throw m 0.25 - 0.5 m/s	1.7 - 0.9	1.9 - 1.0	2.6 - 1.3	3.2 - 1.6	3.9 - 1.9	4.3 - 2.2	4.1 - 2.1
	Pa	5	7	12	19	27	33	31
	NR	14	17	25	32	37	40	37
350 DIA	L/s	100	125	150	175	200	225	250
	Throw m 0.25 - 0.5 m/s	1.7 - 0.8	2.4 - 1.2	2.8 - 1.4	3.3 - 1.6	3.8 - 1.9	4.2 - 2.1	4.7 - 2.4
	Pa	5	10	15	20	26	33	41
	NR	12	21	27	31	35	38	41
400 DIA	L/s	150	180	200	220	250	280	300
	Throw m 0.25 - 0.5 m/s	2.3 - 1.1	2.7 - 1.4	3.0 - 1.5	3.3 - 1.7	3.8 - 1.9	4.2 - 2.1	4.5 - 2.3
	Pa	7	10	13	16	20	25	29
	NR	22	27	30	32	36	39	41

NOTE:

All throws based on terminal velocities of 0.25 - 0.5 m/s

For Return Air Applications Multiply Pa x 0.75, NC Levels remain the same

Please contact our **Sales Office on 01924 444 174** for selection guidance on the above.